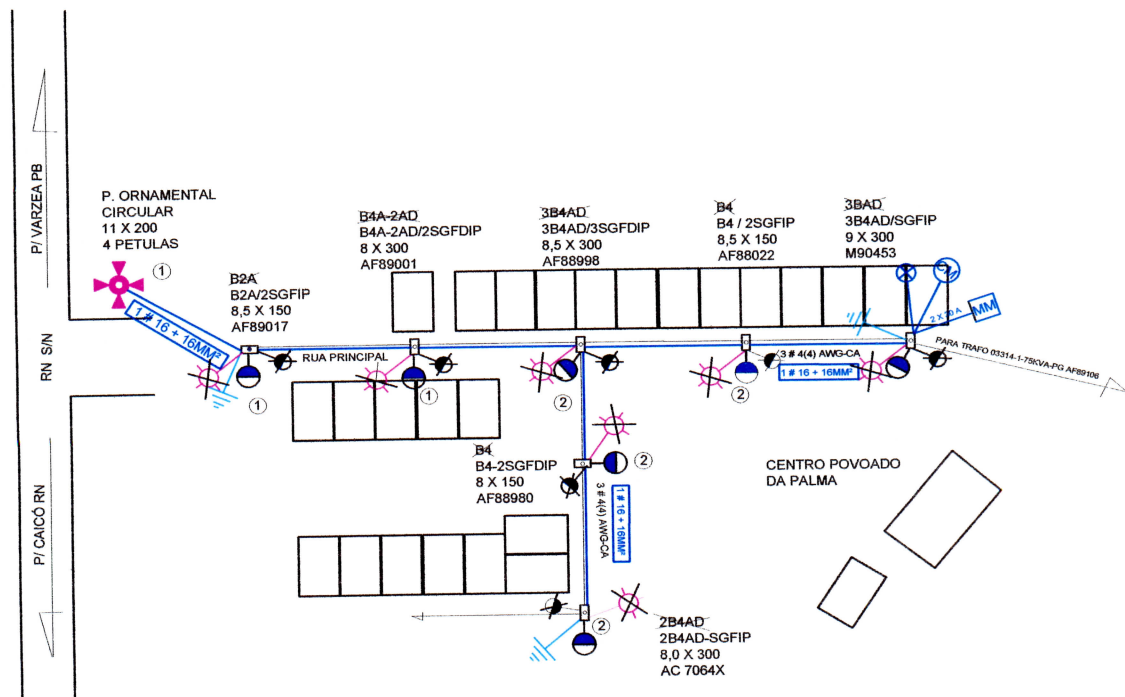











POVOADO DA PALMA




 Eletrotecnista
 CREA 2101161214

LEGENDA

-  LUMIÂNIO FECHADA DE 250 W - PROJETADA
- ① COMANDO 01 CHAVE MAGNÉTICA
- ② COMANDO 02 CHAVE MAGNÉTICA
-  RELÉ FOTOELÉTRICO NF RETIRADO DA REDE DE IP
-  LUMINÁRIA COM LAMPADA DE 70 W RETIRADO DA REDE DE IP
-  POSTE CONCRETO CIRCULAR COM LUM. VAPOR DE SÓDIO DE 250 W
-  MEDIÇÃO MONOFÁSICA/CHAVE MAGNÉTICA 2 X 30 A
-  REDE DE BT EXISTENTE
-  REDE DE IP PROJETADA
-  POSTE DE BT EXISTENTE
-  ATERRAMENTO

TÍTULO DA OBRA		
DATA	1 / 12 / 11	INSTALAÇÃO DE REDE DE ILUMINAÇÃO PÚBLICA COM POSTES, LUMINÁRIA E MEDIÇÃO DO ACESSO DO POVOADO DO DISTRITO DA PALMA - CAICÓ RN.
PROJETADO	AROLDO	
DESENHADO	AROLDO	
ESCALA	1 / 1000	
PRANÇA	1 / 1	